

D-Motor International bvba

Houtekiestraat 11

B-8540 Deerlijk, Belgium

Tel. +32 56 49 81 49

Info@d-motor.eu**SERVICE BULLETIN D-MOTOR**

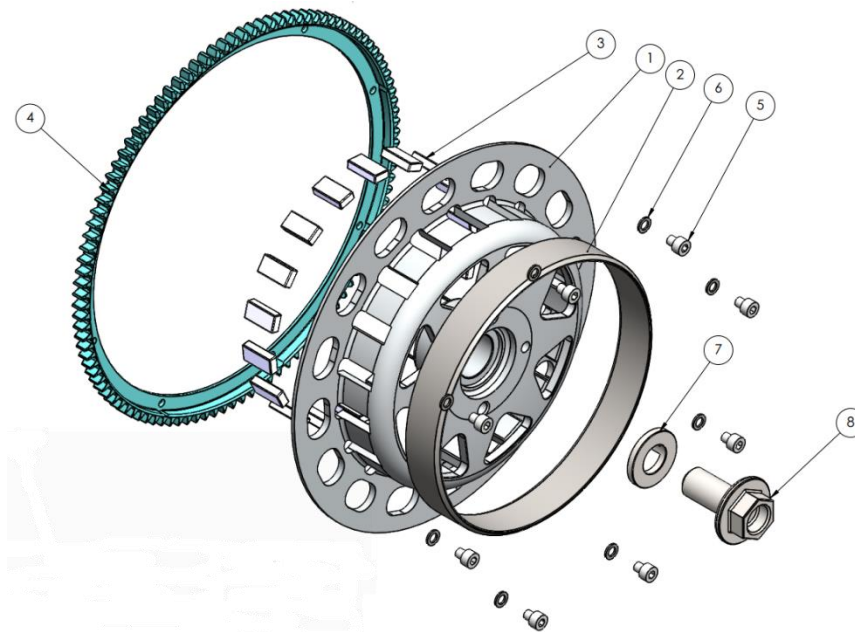
Service Bulletin NO. 2019-014/2

SUBJECT : Alternator Flywheel modifications (improvements) Version 2

! The alternator coil part was left out of 2019-014/1 !

MODELS AFFECTED : All models on LF26 and LF39 engines**TIME OF COMPLIANCE :** from 11/06/2019, or when due to service**AFFECTED SERIAL NUMBER(S) :** See (*)**Scope :**

The FlyWheel (alternator) structure was modified (structure). the new model is stronger and more resistant to large forces. The fixation was changed. (new special washer added)



Service Bulletin 2019 - 014							
ISSUED (KGH)			REVISED (PDE)			Pages	Rev.
Day	Month	Year	Day	Month	Year		
13	06	2019	12	06	2019	9	2

ITEM N°	PART N°	DESCRIPTION	BOM Version / QTY
1	STD_ALT_FLW_02	Alternator Magnet Wheel	1
2	STD_ALT_STM_01	Alternator Steel Magnet Ring	1
3	STD_ALT_MAG_01	Alternator Magnet	18
4	STD_COG_ALT_01	Alternator Cogwheel	1
5	Hex 912 M5X6	Hexagon Socket Bolt M5X6	8
6	STD_WASHER	Washer M5VZ_050.001	8
7	STD_ALT_WASHER_01	Alternator Locking Washer	1
8	STD_BOL_M16X1.5(*)	Alternator Bolt M16X1.5	1
7 >>> Put in according slot in the cranckshaft			

ECO (Egineering Change Order)

The openings on the Flywheel are triangular now, instead of trapezoidal.
The body is thicker.

The Stator plate has changed

(*) M16X1.25 / M16X1.5 Bolt

Depending on the Serial number of the Cranckshaft, the bolt dimensions are

If S/N starts with 'FAR' the Bolt to use is M16X1.25

If S/N is NOT FAR, the bolt to use is M16X1.5

Bolt tension : 110 Nm – in case of doubt, contact our technical department

CAUTION : The Stator plate has changed as well !

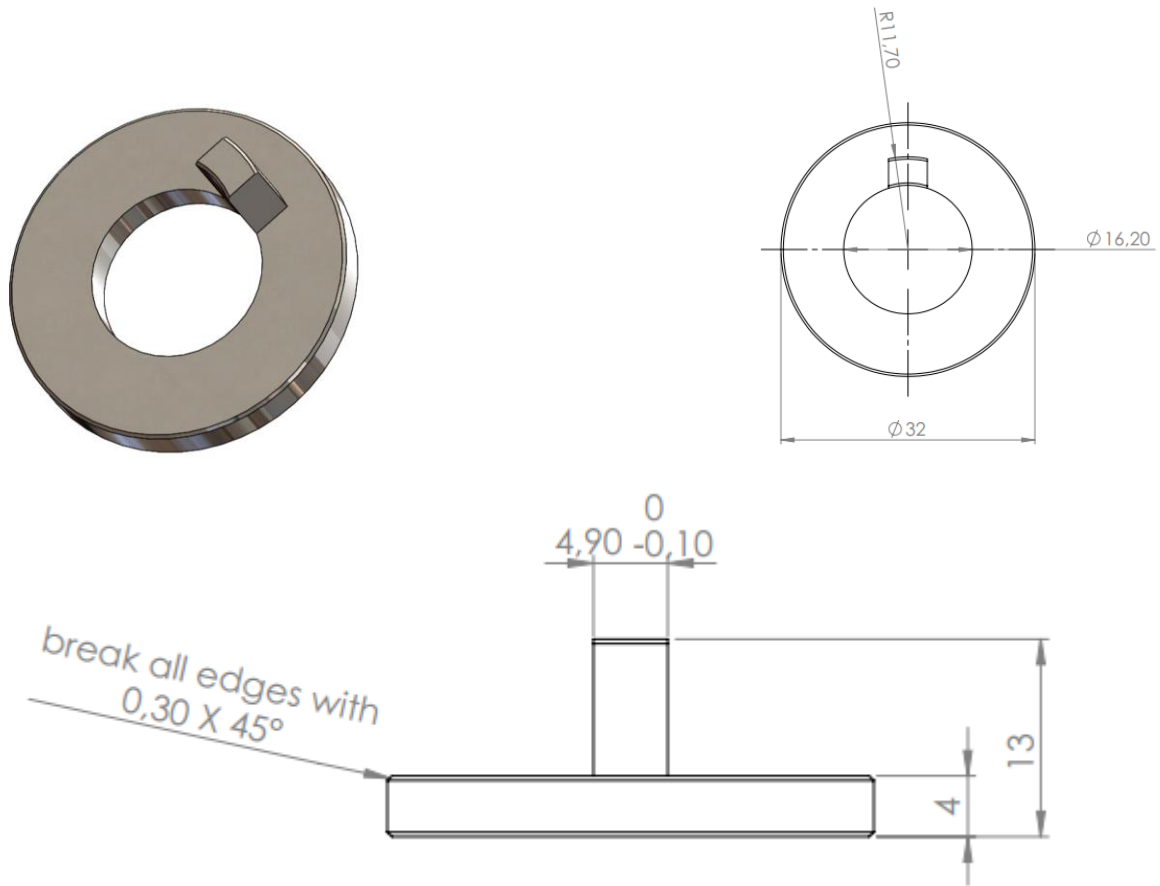
Do not use the 'old' stator plate

Fixation :

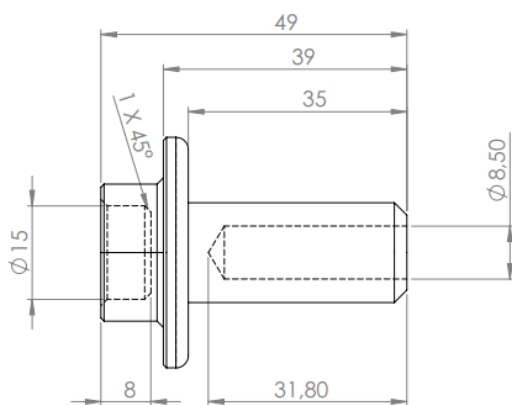
- glue (Loctite 648) on magnets when mounting
- mount with press
- shorten M5 bolts after mounting

Service Bulletin 2019 - 014							
ISSUED (KGH)			REVISED (PDE)			Pages	Rev.
Day	Month	Year	Day	Month	Year	9	2
13	06	2019	12	06	2019		

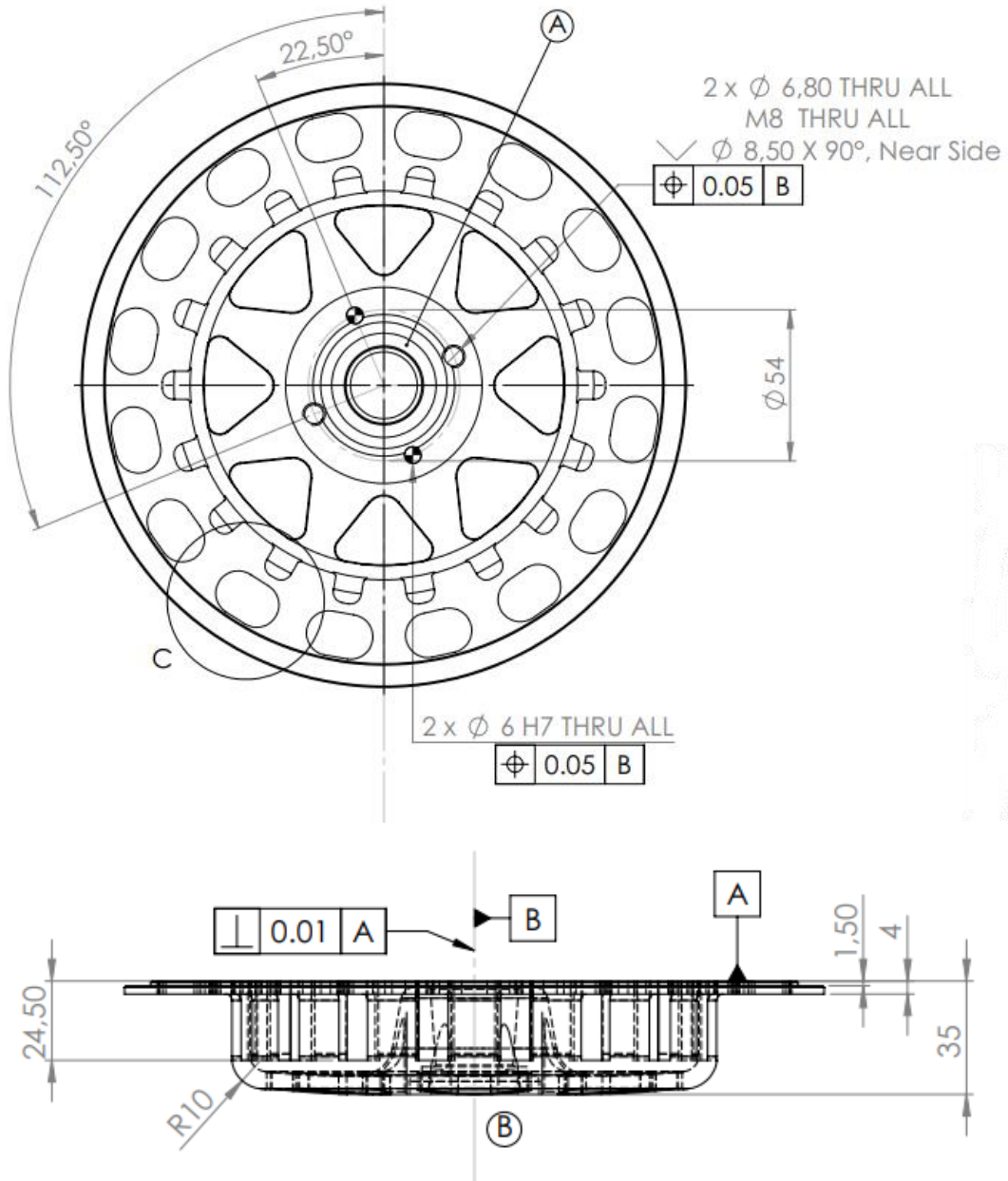
Fixation of the wheel (1) on the backplate body : use special washer (D-Motor made) –
STD_ALT_WASHER_01



Bolt structure (fixation bolt)

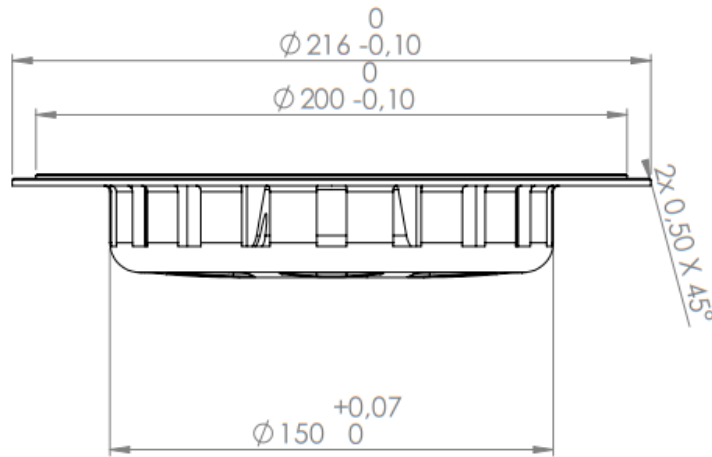


Service Bulletin 2019 - 014							
ISSUED (KGH)			REVISED (PDE)			Pages	Rev.
Day	Month	Year	Day	Month	Year	9	2
13	06	2019	12	06	2019		

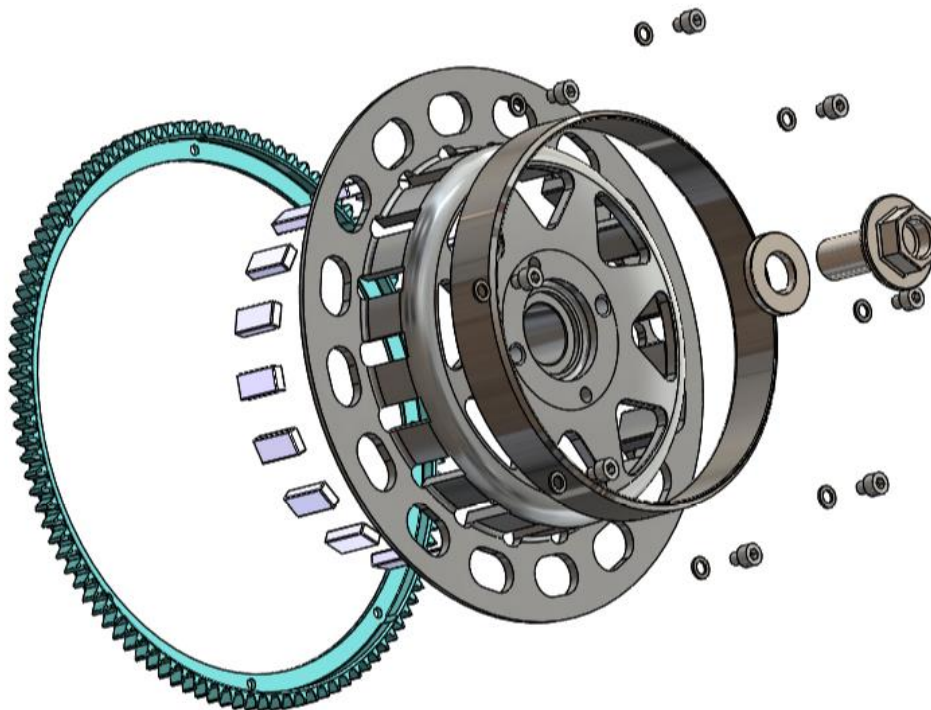


REVISIONS				
ZONE	REV.	DESCRIPTION	DATE	APPROVED
E6	A	Front face of cone is brought back with 2mm	11/03/2019	PDE
A7	B	chamber of Ø32.5 with a depth of 2.5mm is added	11/06/2019	PDE

Service Bulletin 2019 - 014							
ISSUED (KGH)			REVISED (PDE)			Pages	Rev.
Day	Month	Year	Day	Month	Year		
13	06	2019	12	06	2019	9	2

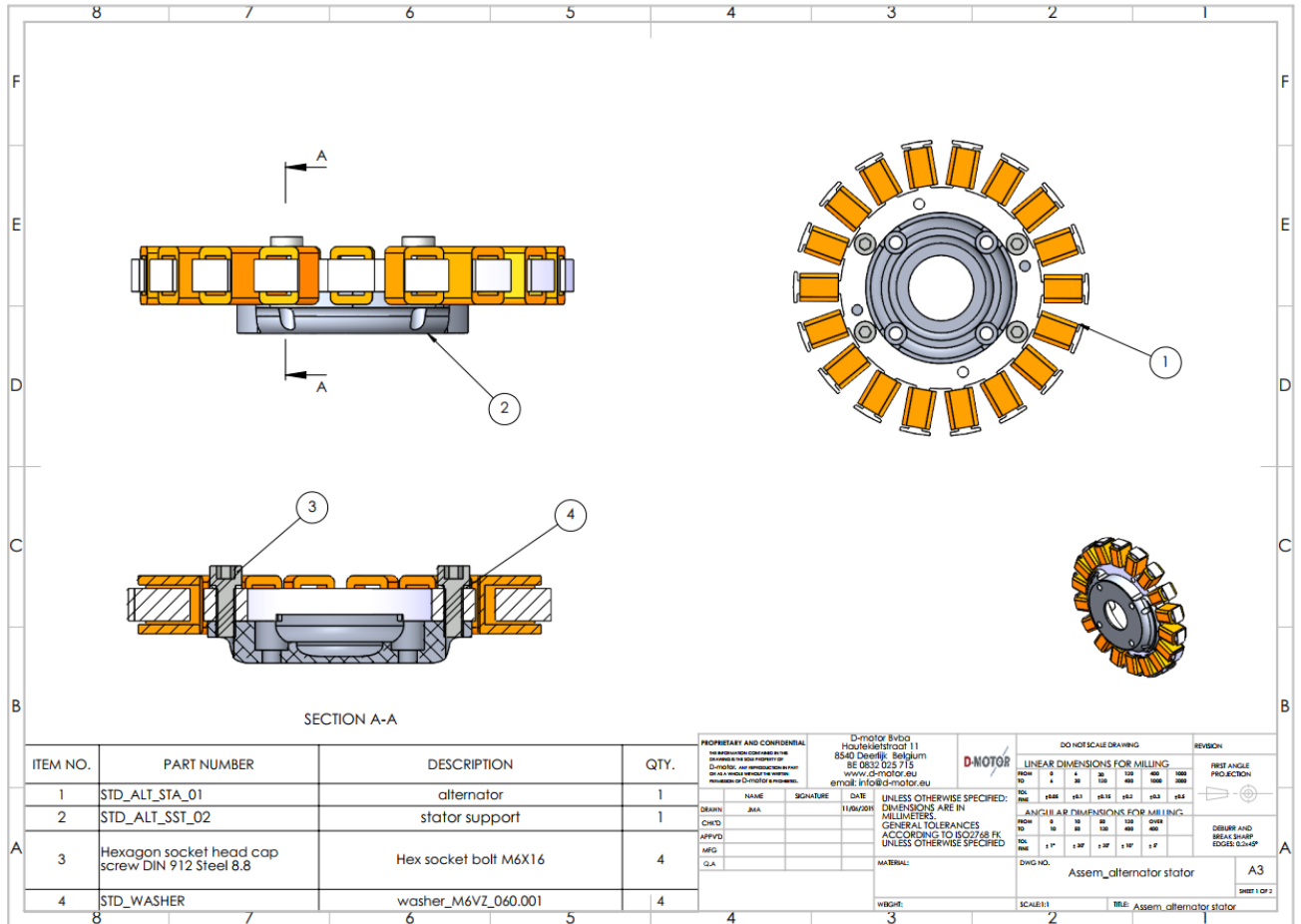


Exploded ASSEMBLY of the modified Alternator Flywheel



Service Bulletin 2019 - 014							
ISSUED (KGH)			REVISED (PDE)			Pages	Rev.
Day	Month	Year	Day	Month	Year		
13	06	2019	12	06	2019	9	2

Alternator Stator (fixation plate to be changed) :



Modification of the Alternator Coil :

- >> The flywheel structure is thicker, the fixation plate Coil ↔ Backplate is thicker
- >> The cabling that enters the coil set should change side !!! (in order to prevent damage to the cabling set)

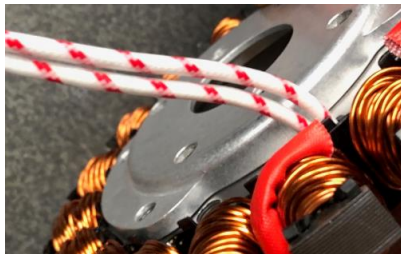
Service Bulletin 2019 - 014							
ISSUED (KGH)			REVISED (PDE)			Pages	Rev.
Day	Month	Year	Day	Month	Year		
13	06	2019	12	06	2019	9	2

Wiring change path for the coil wires :

Procedure

- 1/ disconnect the wiring from connector or box
- 2/ change the wiring from the top side (the side the flywheel is covering the coil set) and guide it to the opposite direction.
- 3/ mount the thicker plate (fixation plate coil – backplate) on the backplate, and mount the coil on the fixation plate, connect the coil wiring again

OLD Fixation plate



NEW Fixation plate

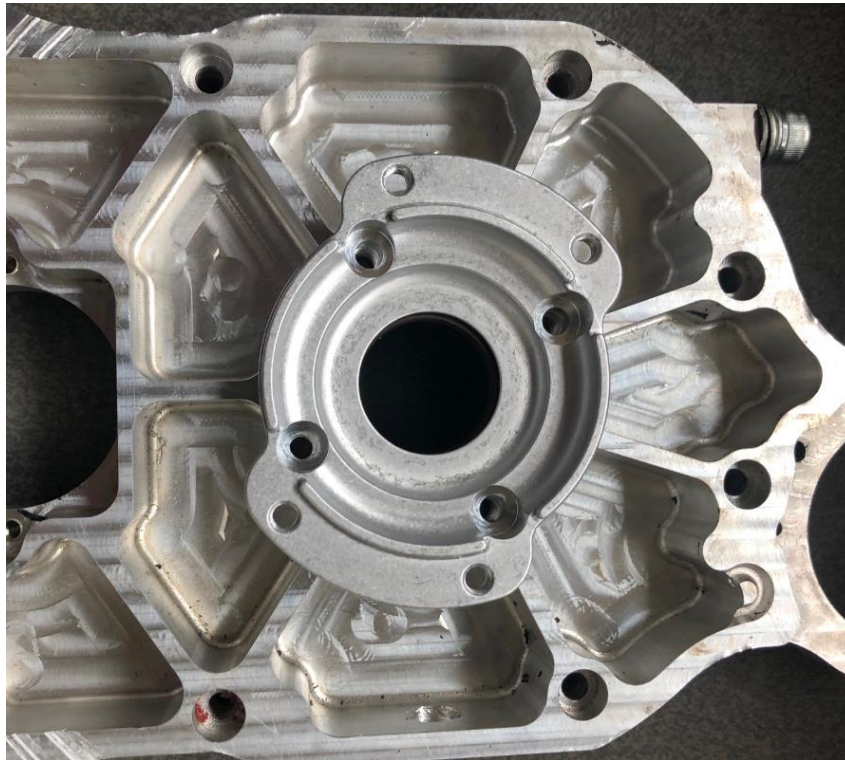


NEW FIXATION PLATE

OLD FIXATION PLATE

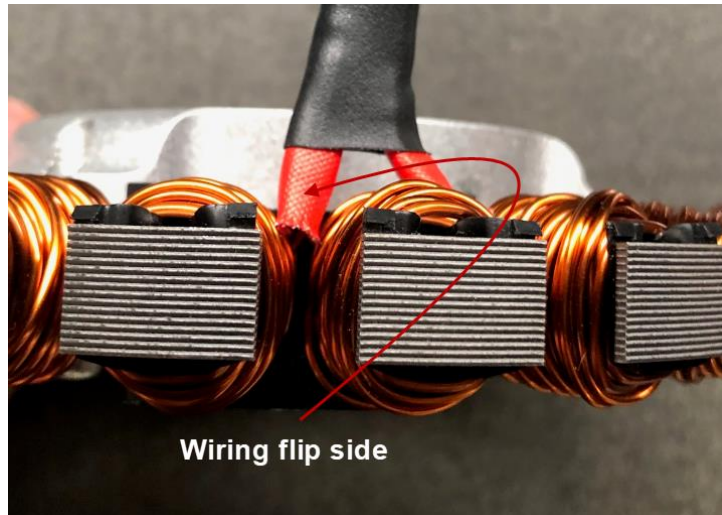
Service Bulletin 2019 - 014							
ISSUED (KGH)			REVISED (PDE)			Pages	Rev.
Day	Month	Year	Day	Month	Year	9	2
13	06	2019	12	06	2019		

Mounting on the backplate :



Service Bulletin 2019 - 014							
ISSUED (KGH)			REVISED (PDE)			Pages	Rev.
Day	Month	Year	Day	Month	Year		
13	06	2019	12	06	2019	9	2

Change of side wiring :



- Get the existing wiring out of the black glider
- Pull back the two generator coil wires to the other side
- Isolate (see red and black isolation) again and mount the coil on the backplate fixation plate
- Connect the wires to the engine again (by connector or box)

⚠ CAUTION

Be sure to check the battery voltage (and status) before operation again.

If your engine has been running on battery with no alternator supply, you should bring the charge level up to normal again before operating the engine.

Service Bulletin 2019 - 014							
ISSUED (KGH)			REVISED (PDE)			Pages	Rev.
Day	Month	Year	Day	Month	Year	9	2
13	06	2019	12	06	2019		